



## BRUCE S. APPLEYARD, PHD, AICP

### Visiting Scholar:

UC Berkeley, Institute of Urban and Regional Development  
Safe Transportation Research & Education Center (SAFETREC)  
Researcher Mineta Transportation Institute (SJSU)  
Principal CFA Consultants

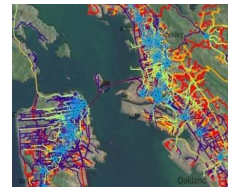


### EDUCATION

<b>Ph.D. City and Regional Planning</b>	University of California, Berkeley	<b>2010</b>
<b>Dissertation:</b> "New Methods to Measure Urban Environments for Consumer Behavior Research: Individual Access Corridor Analysis of Environmentally Sustainable and Healthy Travel to Rapid Transit"		
<b>Inside Field Statement:</b> "Ecologies of Land Use, Transport & Urban Design"		
<b>Master of City Planning (4.0 GPA)</b>	University of California, Berkeley	<b>1997</b>
<b>Thesis:</b> "Retrofitting Auto-Suburbia: A Community Guide to Overcoming Auto-Domination"		
<b>B.A. in Geography</b>	University of California, Berkeley	<b>1989</b>
<b>Emphases:</b> Urban & Physical Geography, Geospatial Analysis (GIS) & Cartographic Science		

### SPECIALIZATIONS:

Bruce specializes in applied GIS research on human settlement and behavior patterns at the intersection of urban design, transportation, and land use and environmental policy. His research and applied work has focused on identifying how these policies and practices can be used in concert with one another to improve a range of sustainability, livability, social equity, and public health outcomes (air & water quality, climate change, physical activity). Other expertise includes merging GIS and visualization tools to better engage members of the public in scenario planning, pedestrian and bicycle planning and design, sustainability/livability/social equity analyses, regional/local transportation & land use governance and policy integration, climate action planning, smart growth planning and implementation, real estate development, and research on the spatial/cognitive relationships between people and place.



### SELECTED PUBLICATIONS

#### Articles

- Appleyard, Ferrell, Carroll. (forthcoming 2013). Toward a Livability Ethic to Guide Planning & Design Decisions. Planners Press. Developing article to submit to JAPA.
- Appleyard, B. 2012. Sustainable and Healthy Travel Choices and the Built Environment: Individual Corridor Analyses of Green and Active Access to Rail Transit Stations. Transportation Research Record: Journal of the Transportation Research Board.
- Appleyard, B. 2011. Street Conflict, Power and Promise: Livable Streets Humanizing the Auto-Mobility Paradigm.
- Nelson, Appleyard et al. Forthcoming 2013. Bus Rapid Transit And Economic Development Case Study Of The Eugene-Springfield, Oregon BRT System. Journal of Public Transport
- Ferrell, Carroll, Appleyard et al. 2011. Reinventing the Urban Interstate: A New Paradigm for Multimodal Corridors. TCRP Report no. 145
- Cervero, Rood, Appleyard. 1999. Tracking Accessibility: Employment and Housing Opportunities in the San Francisco Bay Area, Environment and Planning A. Research examining the spatial relationship between workforce housing &



employment opportunities and key social equity indicators.

• **Working Papers/Monographs**

- Appleyard. 2012. **Deconstructing The D-Variables: New Methods To Measure The Built Environment For Travel Behavior Research**. Submitted for consideration by the National Academies of Science's *Transportation Research Record* (TRR).
- Appleyard. 2012. **Relationships Between Crime, the Built Environment and Sustainable and Healthy Travel Choices to Access Transit Stations**. Submitted for consideration by the National Academies of Science's *Transportation Research Record* (TRR).
- Appleyard et al. 2012. **TOD and Employment Resiliency**. Submitted for consideration by the National Academies of Science's *Transportation Research Record* (TRR).
- Appleyard, Ferrell, Carroll. 2009. **Station Access for Highway Transit Systems: International Review and Normative Framework for Multimodal Public Transportation Station Access Within and Near Highways and Expressways**. Paper presented at the 2009 Transportation Research Board Conference, Washington DC
- Appleyard, Ferrell, Carroll. 2009. **Station Access for Highway Transit Systems: International Review and Normative Framework for Multimodal Public Transportation Station Access Within and Near Highways and Expressways**. Paper presented at the 2009 Transportation Research Board Conference, Washington DC.
- Appleyard. 2009. **Station Access in the Era of Climate Change and Mortgage Meltdowns**,

**Books/Reports**

- Moore, Thorsnes, Appleyard. 2007. *The Transportation/Land Use Connection*, Planners Press. Designed as a practical textbook for graduate students, as well as a professional guide, this book presents how to effectively integrate transportation, land use and urban design policies and practices.
- Appleyard, et al. 2007. "Smart Cities: Solutions for China's Rapid Urbanization". Natural Resources Defense Council. I served as the lead author on this NRDC report discussing the environmental implications and regional governance and policy solutions to transport and urbanization trends in China.
- Appleyard, B. & Appleyard, D. (Forthcoming 2013). *Livable Streets 2.0*. Island Press

**Chapters/Sections**

- Appleyard. 2009. **Pedestrian and Bicycle Planning**. An *ICMA Green Book Local Planning: Contemporary Principles and Practice*. Editors: Hack et al. ICMA
- Appleyard. 2009. **Encyclopedia of the City**. Editor: Roger Caves. Authored the following: *Parks, Planning Commissions*, and *Allan Jacobs*.
- Ferrell, Carroll, Appleyard et al. 2011. **Reinventing the Urban Interstate: A New Paradigm for Multimodal Corridors**. TCRP Report no. 145

**PREVIOUS APPOINTMENTS:**

- Associate Research Professor of City & Metropolitan Planning in College of Architecture and Planning at, the University of Utah (2011-2012)
- Senior Planner/Urban Designer Dowling Associates, Oakland, CA (5/07-3/11)
- Senior Planner/Project Manager, MIG, Portland, OR (6/06-5/07)
- Senior Planner/Urban Designer, SERA Architects, Portland, OR (5/05-6/06)
- Planning and Urban Design Consultant, Oregon & Virginia (2002-05)
- Adjunct Faculty, Urban Studies & Planning, Portland State University (1/04-5/04)
- Adjunct Faculty, Urban and Environmental Planning, University of Virginia (1/03-5/03)
- Planning Policy Analyst, Southern Environmental Law Center, Charlottesville, VA (8/99-8/02)
- Neighborhood Planner, Planning & Community Development, Charlottesville (6/98-7/99)
- Research Associate, Institute for Sustainable Design, University of Virginia (12/97-5/98)
- Research Associate, Institute of Urban & Regional Development, UC Berkeley (12/95-6/97)
- Researcher, GIS Lab, Dept. of Landscape Architecture & Environmental Planning, UC Berkeley ('95-'96)
- Cartographer/GIS Consultant, California (1/89 - 5/95)



**Comment [B1]:** *Designing Walkable Urban Thoroughfares: A Context Sensitive Approach*, RP-036A was approved in 2010 as a recommended practice of the Institute of Transportation Engineers (ITE). It supersedes the proposed recommended practice, *Context Sensitive Solutions in Designing Major Urban Thoroughfares for Walkable Communities*, RP-036, dated March 2006. The comment period on the proposed recommended practice closed on December 31, 2006